

THE EXHIBIT

The Newsletter of UL Lafayette Science Museum



Letter from the Director

DR. JENNIFER E. HARGRAVE, UL LAFAYETTE SCHOOL OF GEOSCIENCES



Greetings from the University of Louisiana at Lafayette Science Museum. It's officially been a year of our partnership with the Lafayette City Government. Now that we've worked through the transition, we are hosting more events, groups, and field trips.

We need you, our newsletter readers and loyal museum supporters, to help get the word out, to follow our social media, to share our events and information, to invite your friends and neighbors to join you on trips to the museum, to become members, to talk about the museum and spread the word about new things that are happening.

We invite you to be science museum ambassadors for us out in the community. We are confident that with the help of our supporters sharing our mission and goals, we will restore the museum to vibrancy.

We anticipate even more school field trips this spring and plan to host summer camp field trips. We can accommodate your groups and welcome the chance to share our exhibits with you. New exhibits are in the works, so be sure to keep checking our social media to learn when they open. Be sure to come explore with us when they do. New exhibits are so exciting, and we can't wait for you to see them!

Best wishes,

Dr. Jennifer Hargrave, Museum Director



Parrot Party with Schoolhouse Safari on March 11

CELEBRATE CHERRY BERRY ICEE'S 25TH BIRTHDAY

UL Lafayette Science Museum will celebrate the 25th birthday of Cherry Berry Icee, an Electus Parrot and Schoolhouse Safari animal ambassador and storytime star. The celebration on Saturday, March 11 from 11 a.m. to 5 p.m. will be filled with educational animal encounters, hands-on displays, scavenger hunts, arts and crafts, storytimes and more.

The event will feature groups including Schoolhouse Safari, The Beetle Experience, Wings of South Ridge, The Urban Naturalist, The TMM Project, and Dip & Dabble Face Painting. There will be live bugs, bunnies, reptiles, hedgehogs, and, of course, birds including toucans, macaws, cockatoos, a golden conure and parrots.

Activities begin at 11 a.m. and continue throughout the day. Guests are invited to join in singing "Happy Birthday" to Cherry Berry Icee at 4 pm led by emcee Taylor Trache of News15. A raffle drawing will follow.

Attendance at the Parrot Party is included in regular museum admission.

CALENDAR OF EVENTS

**STEM SATURDAY :
PARROT PARTY W/
SCHOOLHOUSE SAFARI
- MAR 11**

**DOWNTOWN LAFAYETTE
UNLIMITED MEMBER
MEETUP - MAR 16**

**HEALING HOUSE FAMILY
ADVENTURE DAY: MAR
18**

**STEM SATURDAY:
WATER WONDER - APR 8**

**SENSORY-FRIENDLY
MUSEUM HOURS: APR
16**

LPL Bibliobike Visits



Lafayette Public Library's Bibliobike will be visiting UL Lafayette Science Museum with science-themed books and library card sign-ups on the following dates from 2:30-3:30 pm:

Friday, March 3

Friday, March 24

Friday, April 14

Look for friendly librarians and their bike full of library books in the museum lobby. Check out books with your library card or LPSS student ID. Don't have a card, no worries! You can sign up for one right there at the Bibliobike!

Family Adventure Day - Healing House



On Saturday, March 18, UL Lafayette Science Museum will participate in Healing House's annual Family Adventure Day with special activities for families having "Fun on the Run!"

For this adventurous fundraiser, families register to participate and are given a map detailing more than 35 locations around Lafayette that are hosting special activities. Complete four adventures to qualify for a grand prize drawing.

Healing House provides support for grieving children and their caregivers so no child has to grieve alone. Visit www.healing-house.org for tickets.

DLU+UL Member Meetup



On Thursday, March 16 from 5:30 pm to 7 pm, Downtown Lafayette Unlimited will host a Member Meetup and Happy Hour at UL Lafayette Science Museum.

DLU members are invited to join fellow business and civic leaders, residents, and downtown lovers for an evening of networking. Registration for UL guests is free and is required; please have guests select the free "DLU Member Ticket" option.

Appetizers and beverages will be provided by Sunday's Soda Fountain. Register for the event at <https://www.eventbrite.com/e/dlu-member-meetup-march-2023-tickets-510890466137>

Sensory Friendly Museum Hours



April is Autism Awareness Month and UL Lafayette Science Museum will host sensory-friendly hours for visitors with special needs on Sunday, April 16 from 11:30 a.m. until 1 p.m. when the museum opens to the general public.

Families with children with special sensory needs are invited to visit the museum to explore the exhibits and planetarium during these dedicated hours and are welcome to stay for as long as they wish once the museum opens to the public at 1 p.m. Visit www.acadianautism.com for more information.



Birthdays at the Museum

CELEBRATE WITH A PARTY THAT'S OUT OF THIS WORLD!

Host your next birthday party or shower at UL Lafayette Science Museum for an event that's sure to be out of this world! Our historic building in the heart of walkable downtown Lafayette provides the perfect setting for a memorable party for children, friends and families.

After the cake and presents, guests can explore the exhibits and all the activities the museum has to offer. It's sure to be a fun and educational experience for groups of all ages.

Our rentals spaces can accommodate parties large or small. Rental spaces include an auditorium with seating capacity for 125 and two classroom spaces adjoined by a moveable wall that seat 35 each or 70 combined. Rooms are equipped with tables and chairs and have access to a kitchenette or in room sinks and prep areas. Catering options are available through the University of Louisiana at Lafayette.

To book your event at UL Lafayette Science Museum, complete the Contact Us form online at <https://lafayettesciencemuseum.org/contact-us/>. A member of our team will contact you to discuss your event needs and reserve your date and space.

MUSEUM MEMBERSHIPS

BECOME A MEMBER TODAY

UL EMPLOYEE: \$45 (1 ADULT)

INDIVIDUAL: \$65 (1 ADULT, 1 GUEST)

DUAL: \$85 (2 ADULTS, 2 GUESTS)

FAMILY: \$115 (2 ADULTS, 4 CHILDREN)

FAMILY FLEX: \$150 (2 ADULTS, 4 CHILDREN, 4 GUESTS)

PREMIUM: +\$50 (2 GUESTS, 10% STORE DISCOUNT, PRIORITY EVENT REGISTRATION)

MEMBERSHIPS ARE AVAILABLE FOR PURCHASE IN THE MUSEUM STORE.



Meet Hannah Hawkins

STUDENT WORKER & RESEARCH ASSISTANT

We interviewed Hannah Hawkins, a UL Student Worker, research assistant and field trip guide. She is a second year Masters' student at UL Lafayette in the Geology with a concentration in Paleontology.

Tell us a bit about yourself?

I am 25 years old and from Lafayette. I have two dogs, a ten year old Shiba Innu named Rascal and a 15 year old Chihuahua named Molly. I love the outdoors and camping, especially places north with tall mountains and deep valleys.

After graduation, what's next?

After graduation I plan to do environmental work in the Pacific Northwest, one of my favorite scenic places in the country.

What's your favorite exhibit?

My favorite exhibit is the "Natural Born Killers" display, but I may be partial because I helped in the creation and installation progress when I was enrolled in Dr. Hargrave's Museum Techniques class in the Fall of 2021.

What is your earliest memory of the museum?

The science museum has always been a fixture of the downtown scene for me, I remember always wanting to get behind the scenes in the lab and help out with the dinosaur bones. And now I get to do that almost everyday and work side by side with some great people in the museum.

What's something people may not know about the museum?

The giant whale known as *Basilosaurus* hanging from the ceiling in the middle of the building was found in north Louisiana! If you've been to the museum and have read the posters, you may have already known!



Hannah Hawkins, UL Geology Masters' student, holding a fossilized Pleistocene Felid (cat family) premolar found on an excavation in the Church Point area where a mastodon was also recently found.

What's the best thing you've heard from a museum patron?

People love the fact that it's a fun indoor and learning activity that they can do with their families, rain or shine, hot or cold.

Why is a science museum in Lafayette important?

I think its important to have the science museum in Lafayette because it's a learning experience for all ages, and we are the closest museum to a lot of Louisiana residents. We get schools that come out from the Lake Charles and the Baton Rouge areas!

How is the University inspiring people of all ages through the museum?

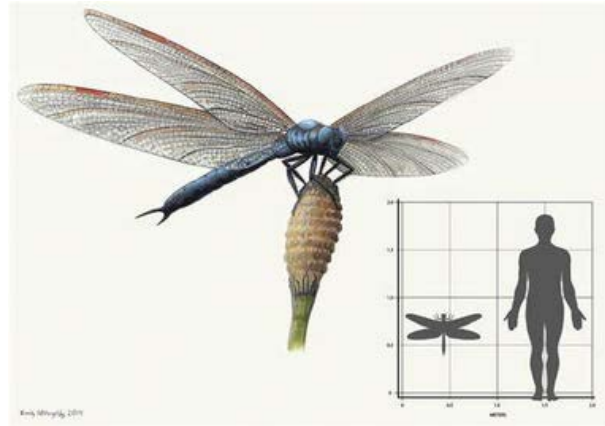
I love the way science has really been a big priority with the addition of the STEM Saturdays once every month, when Dr. Hargrave puts on a science display for everyone with fun activities for kids.

Continued, Page 6

Hannah Hawkins, Continued

What's your favorite scientific fun fact?

In the Carboniferous period, a time before the dinosaurs, there was what we call “The Great Oxygenation Event” where the atmospheric oxygen levels increased so greatly requiring less effort for breathing and respiration that it caused insects to grow huge. The species *Meganeura monyi* is a dragonfly who had a wingspan of 2.5 feet -- the largest insect ever to roam the planet!



Meganeura monyi, an ancient dragonfly species of the Carboniferous Period, 359 to 299 million years ago.

In the Planetarium

MARCH & APRIL SCHEDULE

A new slate of shows is now on view under our state-of-the-art, all-digital, full-dome planetarium. Planetarium shows run every Friday at 4 p.m. and throughout the weekend. Saturday morning features a special children's program at 11:15 a.m. Public programs continue Saturday and Sunday at 1:30, 2:45 and 4 p.m.

MARCH	<i>Friday</i>	<i>Saturday</i>	<i>Sunday</i>
11:15 a.m.		The Little Star	
1:30 p.m.		Moons: Worlds of Mystery	Moons: Worlds of Mystery
2:45 p.m.		The Sky Tonight/Rusty Rocket*	The Sky Tonight/Rusty Rocket*
4:00 p.m.	The Sky Tonight/Rusty Rocket*	Cosmic Journey	Cosmic Journey

APRIL	<i>Friday</i>	<i>Saturday</i>	<i>Sunday</i>
11:15 a.m.		Accidental Astronauts	
1:30 p.m.		Black Holes	Black Holes
2:45 p.m.		The Sky Tonight/Little Star*	The Sky Tonight/Little Star*
4:00 p.m.	The Sky Tonight/Little Star*	Dawn of the Space Age	Dawn of the Space Age

**As we work to grow our planetarium team, our live planetarium show "The Sky Tonight" or an alternate special children's program will be shown on Friday at 4 p.m. and Saturday/Sunday at 2:45 p.m. based on staff availability.*

Apollo Model Restoration Project

HOW MUSEUM COLLECTIONS ARE RESTORED AND PRESERVED

In our last newsletter, we told you about retired planetarium curator Dave Hostetter and technician Paul McCasland driving to Kingsport, TN to retrieve models of three models of NASA's Apollo Spacecraft: The Lunar Module and the Command and Service Modules, all of which were set to be discarded if they were not claimed. These pieces of space history will serve to illustrate NASA engineering, which made the first piloted moon landings successful and allowed the first astronauts to walk on the moon.

Once at the museum, the models were thoroughly inspected for dirt, cracks, missing material, and other damage. This included documenting a complete photographic record of the exterior and the inside of the ascent stage, which ultimately will be bolted onto the descent stage. Then they were lightly cleaned with brushes of various sizes, a series of damp cloths and cotton swabs. The most important part of the process was to do no harm—working very slowly and carefully to prevent any new damage. The gold-colored foil on the descent stage and its landing gear was challenging, as some parts were quite fragile.

Using imitation gold leaf, glue and tweezers, breaks and gaps in the descent stage foil covering were repaired. One particularly long crack took a few hours of work to completely cover. Then volunteers lifted the 100lb descent stage onto a table to allow the bottoms of the landing pads to be cleaned. When moving the models out of the museum in Kingsport, one of the landing pads was stuck to the carpet. Upon closer inspection, it turned out to be chewing gum! Our curators had a difficult time imaging how gum made its way underneath the landing gear, but nevertheless it was carefully removed and thoroughly cleaned.

The ascent stage looked in good condition upon initial inspection. After a thorough cleaning, it appeared the rendezvous radar antenna mount was bent. A replacement was made with the museum's 3D printers and painted to match. Once installed, the the parts were bolted together. The fully assembled Lunar Module model weighs around 150 pounds. Next the Command and Service Modules, also together weighing about 150 pounds, will be inspected, photographed and cleaned. With luck, no repairs will be needed and they will be reassembled and made ready for hanging in the lobby. The Lunar Module will hang there, too, but the two models are not designed to connect to each other. Once the models are hung in the lobby, interpretive panels will focus on the history of the design of Apollo, and how it changed with the mission requirements. Apollo, as built, was much different from Apollo as it was initially conceived!



Kids' Curiosity Corner

Find the words from our museum exhibits!

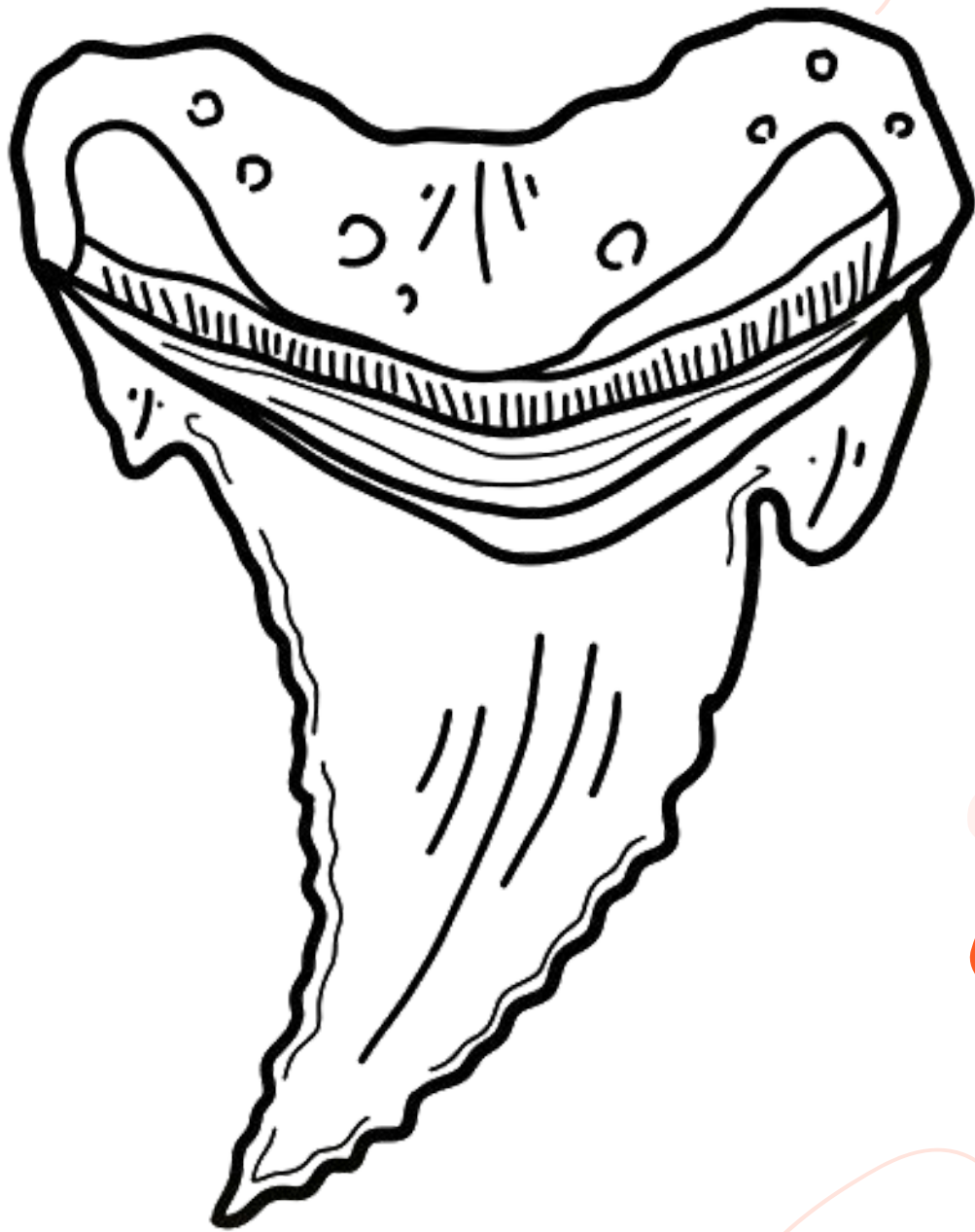
L	V	O	V	V	B	W	R	U	A	A
M	P	Z	Q	H	A	L	I	T	E	C
V	A	G	O	R	I	L	L	A	N	W
S	T	E	G	O	S	A	U	R	U	S
Q	C	P	H	E	A	S	A	N	T	S
N	H	Y	Z	L	G	H	R	A	E	B
B	E	L	T	T	U	H	S	F	U	R
J	S	C	J	M	D	T	U	A	F	X
J	R	O	T	P	A	R	H	A	T	U
Z	E	N	A	C	I	R	R	U	H	Y
S	U	N	I	T	C	A	H	P	I	X

Find the words

BEAR
GORILLA
HALITE
HURRICANE
PATCHES
PHEASANT
SHUTTLE
STEGOSAURUS
UTAHRAPTOR
XIPHACTINUS



● Coloring Page



Did you know that the oldest fossil shark tooth ever found is 410 million years old? These ancient sharks gave rise to the sharks we have around today. Modern sharks evolved around 100 million years ago. Megalodon shark teeth, like the image here, are up to 23 million years old!